

SOURCE: TESLA

Myrtle Creek Battery Energy Storage System (BESS)

Formerly Myrtle Creek Solar Farm

Myrtle Creek Solar Farm will now be developed as the Myrtle Creek battery energy storage system (BESS)

The project's history

Since 2020, Terrain Solar has been working on plans for Myrtle Creek Solar Farm, accompanied by a BESS. The project is located in Myrtle Creek, about 20 km south of Casino.

In November 2023, we conducted door-knocking with local residents to introduce the project and provide early design information.

We submitted our Scoping Report to the Department of Planning, Housing and Infrastructure (DPHI) in early 2024, which assessed the environmental and social impacts of both the solar farm and the BESS. You can read the report here: <https://www.planningportal.nsw.gov.au/major-projects/projects/myrtle-creek-solar-farm-0>.

What is changing and why

Originally, the project included both a solar farm and a BESS on 325 hectares of land. However, based on increasing solar farm developments and valuable feedback from the community and stakeholders, we've decided to focus solely on the BESS. The updated project will now only include a BESS, reducing the land use to about 9 hectares. This change will significantly reduce potential environmental and visual impacts.

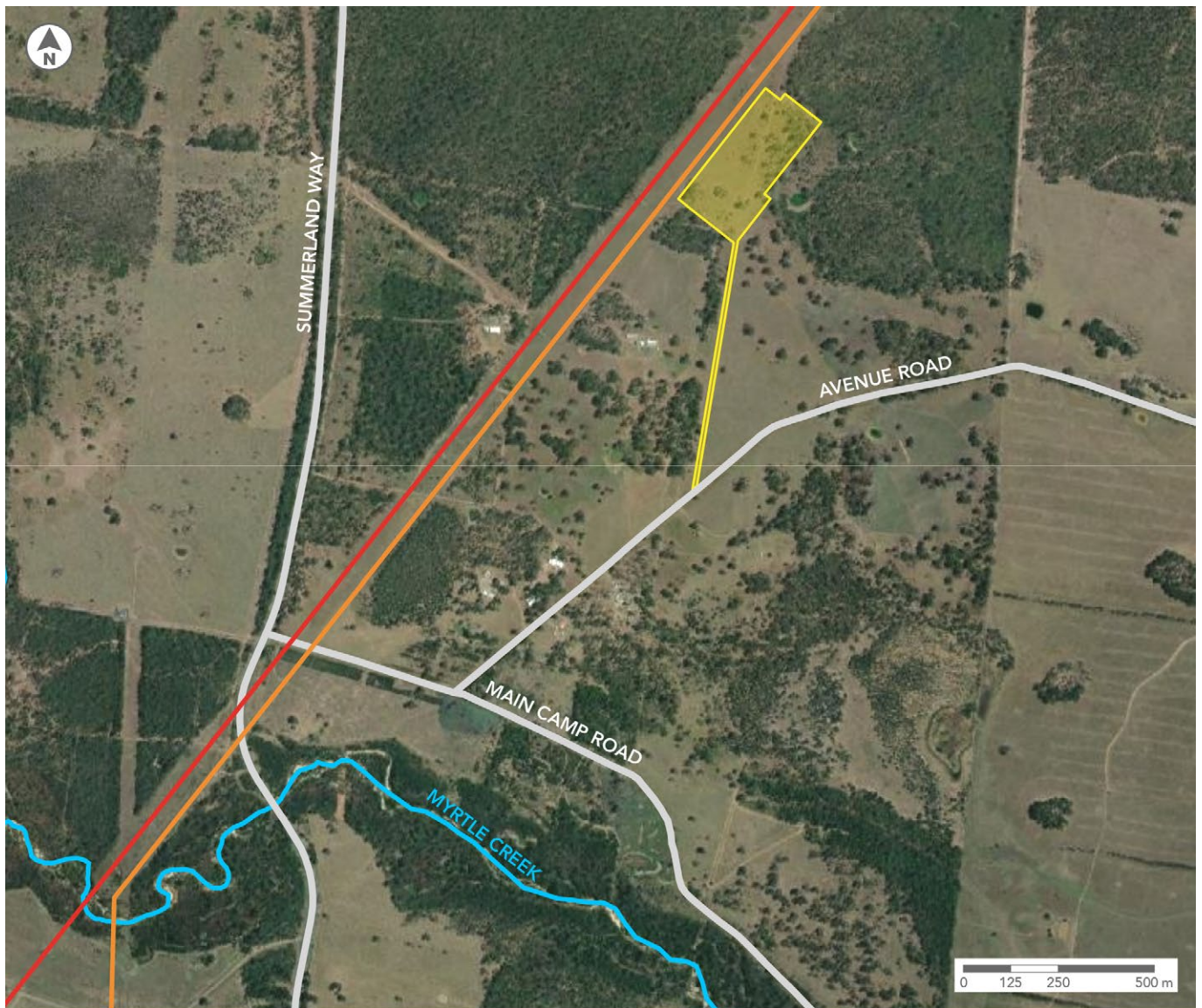
The BESS will be located adjacent to the existing Transgrid 132 kV and 330kV transmission lines, slightly north of Avenue Road.

Shifting from a hybrid solar farm and BESS project to a BESS-only focus will allow us to play a vital role in 'grid firming.' This means we can help ensure that energy generated by nearby solar projects is available when the grid needs it most, by dispatching electricity during peak demand periods.

The project

The project will include:

- a capacity of up to 100 megawatts (MW) with two hours of storage (100MW / 200MWh)
- multiple containerised batteries on the project site, typically resembling shipping containers
- a project substation and switching station
- associated infrastructure, including a storage area, internal access tracks, on-site parking, security fencing, lighting, and a control building.



LEGEND

 Development Site	 Electricity Transmission Line 330kV	 Watercourse
 Road	 Electricity Transmission Line 132kV	

Planning and approval

Terrain Solar will continue to seek planning approval for the BESS from DPHI, through a State Significant Development Application (SSDA). The Scoping Report we submitted in early 2024 included findings from preliminary studies on the environmental and social impacts of both the solar farm and the BESS.

Community consultation

We will continue to engage with the community through information sessions, letters, and door knocks to ensure that community feedback meaningfully shapes the project.

Learn more and ask questions

We welcome any questions, feedback and comments about the change to the Myrtle Creek BESS project.

Next steps and impacts

We will now prepare an Environmental Impact Statement (EIS), building on the studies from the Scoping Report. The EIS will focus on the potential environmental and social impacts of the BESS during construction and operation. It will also propose mitigation measures for managing these potential impacts, including:

- noise and vibration
- traffic and access
- visual impacts
- social wellbeing
- flooding and bushfires
- biodiversity impacts
- heritage, including Aboriginal heritage.

PLEASE REACH THE TEAM HERE:

info@myrtlecreeksolarfarm.com.au | 1800 749 232 | www.myrtlecreeksolarfarm.com.au



TERRAIN SOLAR